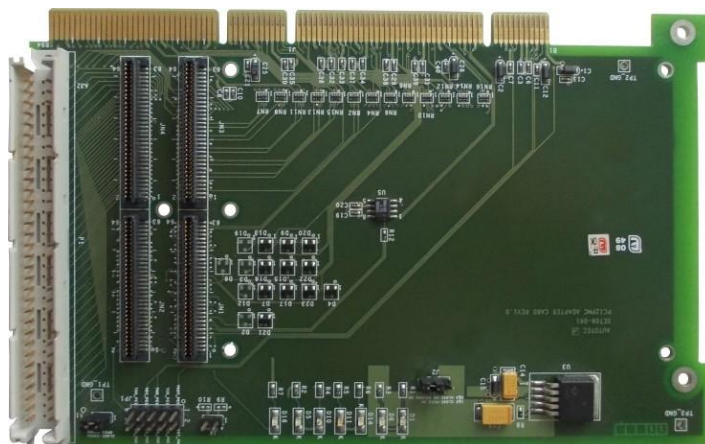




## AT-PCI-PMC-Adapter

### PCI Non-intelligent PMC Carrier Card



- Half-length PCI card
- Adapts a single-width PMC form factor to PCI/X
- Support 32/64 bit PCI Bus
- Supports both 33Mhz/66Mhz or extended
- Four 64-pin PMC connectors
- Compliant to IEEE P1386.1 Specifications
- Front or rear connection I/O access
- Universal 5V or 3.3V PCI Signaling
- LED indicators to indicate the Power supplies
- No software drivers are required

### OVERVIEW

PCI to PMC is an adapter to install a PMC card into a PCI slot. Sometimes known as a carrier or converter PCI to PMC is a universal voltage 1/2 length PCI card, and will fit into standard desktop PC environment. The combination of PCI to PMC and mounted PMC will occupy a single PCI slot. Mechanically, a PMC card fits cleanly on a short-length PCI board, resulting in a highly acceptable delivery solution for desktop applications. It is recommended that this adapter be installed in a standard PCI-based system. Designed to host 32/64-bit PMC card, the PCI to PMC adapter requires no special bridge software to integrate PMC Mezzanine cards in to PCI systems. The extender supports 3.3V and 5V PCI bus signaling. The product will work with 33 MHz and 66 MHz clock speeds, and with 32/64-bit bus width. The carrier card acts simply as an adapter to route PCI bus signals to and from the PMC card through the PCI card slot edge connector. All AT's PMC cards and those from other vendors are supported. This board provides an easy and low cost solution that enables use of a PMC mezzanine I/O card in a standard PCI computer system. LED present indicators provide the detection of PMC card and the power supplies plugged onto the adapter card. This card is well suited for enterprise router/switch/gateway providers and system integrators.

### Standard Usage

Mount the PMC card to the PCI adapter. Carefully grasp the upper edge of the adapter. Align the gold striped edge connector with the expansion slot socket. Press the board firmly into the socket. Make sure that the metal bracket provided is fixed firmly into the corresponding slot

### Applications

- Fast, Simple Expansion
- Fast Integration of COTS or Custom I/O
- Ultra-high bandwidth to/from daughter boards

# AT-PCI-PMC-Adapter

## PCI Non-intelligent PMC Carrier Card

### PRODUCT SPECIFICATIONS

#### Mezzanine Slots

- One PMC Slot
- 32bit, 33 MHz or 66MHz

#### Size

- Half size PCI card
- 32 bit PCI 2.1 Compliant

#### PMC Compatibility

- PMC compliant as per the IEEE 1386 specification

#### Interrupts

- INTA, B, C, D routed to PCI connector from PMC

#### VIO

- PCI IO Voltage is set by the PCI backplane. VIO is routed from the PCI connector to the PMC

#### Access Width

- Standard PCI byte lanes supported for byte, word and long access dependent on installed PMC
- 64 or 32 bit operation supported

#### LED's & Test Points

- Power indicator LED's

#### Environmental

- Operating Temperature: -40°C to +85°C
- Storage Temperature: -55°C to +100°C
- Relative Humidity: 5% to 95% (non-condensing)

#### Software Interface

- No software set-up required by PCI to PMC adapter

#### Warranty

- 1 Year warranty standard

### ORDERING INFORMATION

#### Hardware Selection

AT-PCI-PMC-Adapter

#### Base Product

AT-PCI-PMC-Adapter = PCI to PMC Adapter Card



- Contact sales for support for other Operating Systems
- Contact sales for configuration of front and rear I/O configuration
- Contact sales for environmental options



Distributor/Reseller

ADTECElectronic Instruments Pvt Ltd  
563/1, PRERANA TOWERS, Ranka Colony  
Road, Off BG Road, Bengaluru 560076  
Email : [sales@adtec.in](mailto:sales@adtec.in)  
Website : [www.adtec.in](http://www.adtec.in)

November2023